



# Empire State Trail

Connecting New York's extraordinary experiences, people, and places.

## Peebles Island State Park to Halfmoon

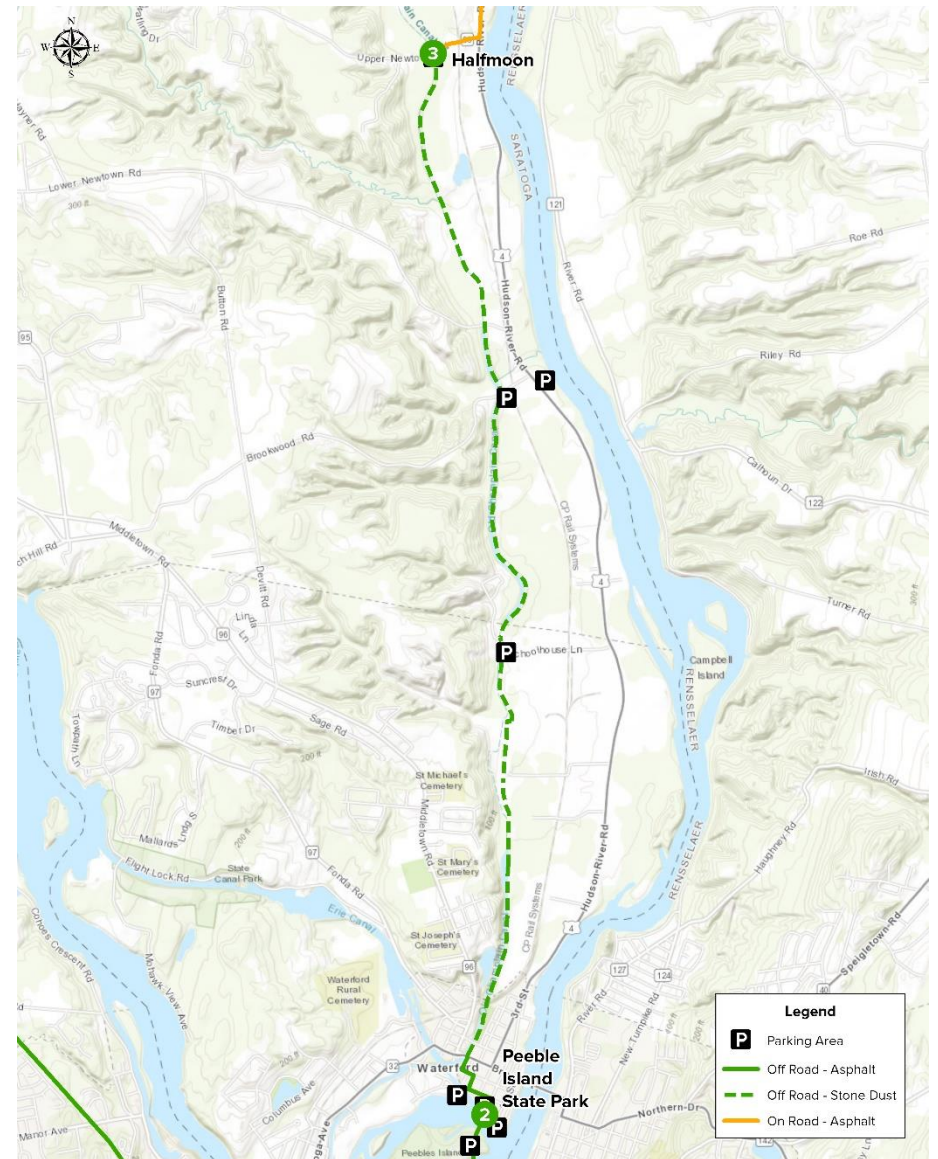
Step-by-step bicycle directions to follow for this segment of the Empire State Trail.

**Start** **2** Peebles Island State Park

Turn	Notes	Distance
→	Slight right onto Second Street	433 ft
←	Turn left onto South St	666 ft
→	Turn right onto 4th St	367 ft
←	Turn left onto Middle St	331 ft
→	Turn right onto 5th St	387 ft
↑	Continue onto Old Champlain Canal Trail	1.67 mi
→	Turn right onto Clute St	125 ft
←	Turn left onto Bells Ln N	0.348 mi
←	Turn left onto Schoolhouse Ln	386 ft
→	Turn right on Champlain Canalway Trail	3.02 mi

**End** **3** Halfmoon

## Northbound along Champlain Valley Trail



**Disclaimer:** Trail users may encounter temporary or permanent changes to the trail route as described in this cue sheet. Trail users must exercise discretion at all times to assure personal safety, including staying alert for movements by vehicles and other trail users, as well as possible modifications to the trail route.