



# Empire State Trail

Connecting New York's extraordinary experiences, people, and places.

## Middleport to Lockport

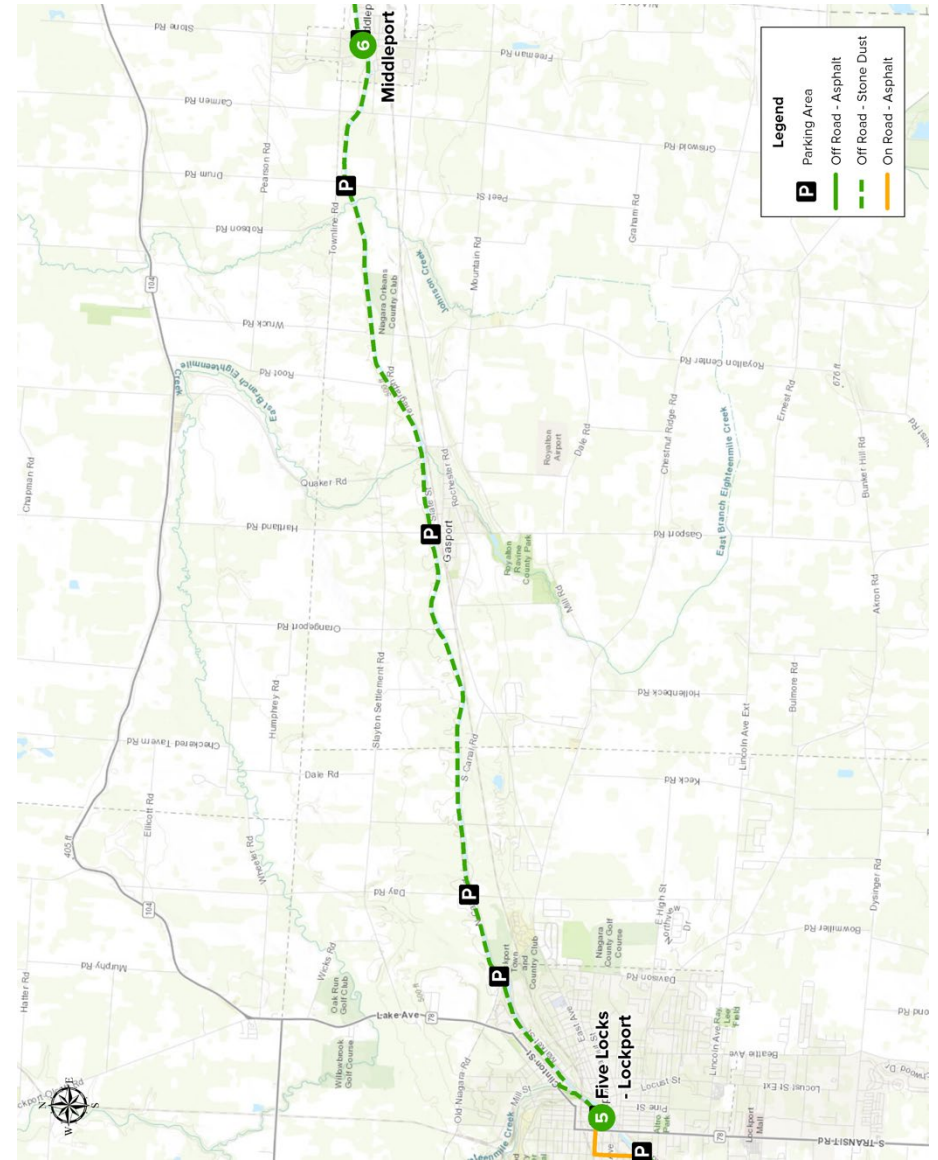
Step-by-step bicycle directions to follow for this segment of the Empire State Trail.

**Start** **6** Middleport

Turn	Notes	Distance
	Head south on N Main St	10 ft
→	Turn right	69 ft
←	Turn left	3.67 mi
↑	Continue onto Hartland Rd	7.56 mi
→	Turn right onto Mill St	26 ft
←	Turn left toward Erie Canal Heritage Trail	413 ft
→	Turn right onto Erie Canal Heritage Trail	1,247 ft
←	Turn left to stay on Erie Canal Heritage Trail	0.408 mi

**End** **5** Lockport

## Westbound along Erie Canal Trail



**Disclaimer:** Trail users may encounter temporary or permanent changes to the trail route as described in this cue sheet. Trail users must exercise discretion at all times to assure personal safety, including staying alert for movements by vehicles and other trail users, as well as possible modifications to the trail route.