



Empire State Trail

Connecting New York's extraordinary experiences, people, and places.

Brockport to Albion

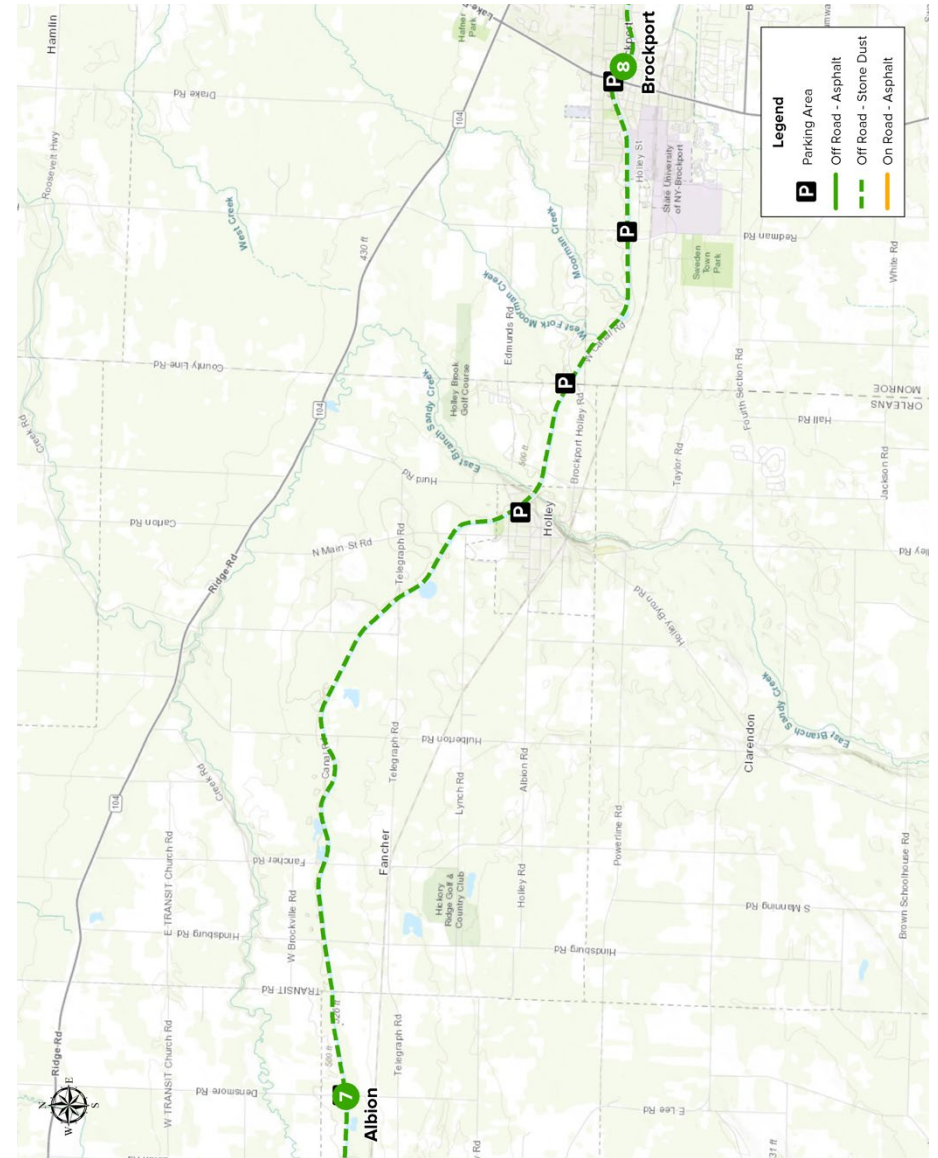
Step-by-step bicycle directions to follow for this segment of the Empire State Trail.

Start 8 **Brockport**

Turn	Notes	Distance
	Head northwest on Erie Canal Heritage Trail toward N Main St/New York State Bicycle Rte 19 A	7.80 mi
←	Turn left onto Hulberton Rd	13 ft
→	Turn right onto Canal Rd	190 ft
←	Slight left onto Erie Canal Heritage Trail	3.56 mi

End 7 **Albion**

Westbound along Erie Canal Trail



Disclaimer: Trail users may encounter temporary or permanent changes to the trail route as described in this cue sheet. Trail users must exercise discretion at all times to assure personal safety, including staying alert for movements by vehicles and other trail users, as well as possible modifications to the trail route.