



# Empire State Trail

Connecting New York's extraordinary experiences, people, and places.

## Camillus to Port Byron

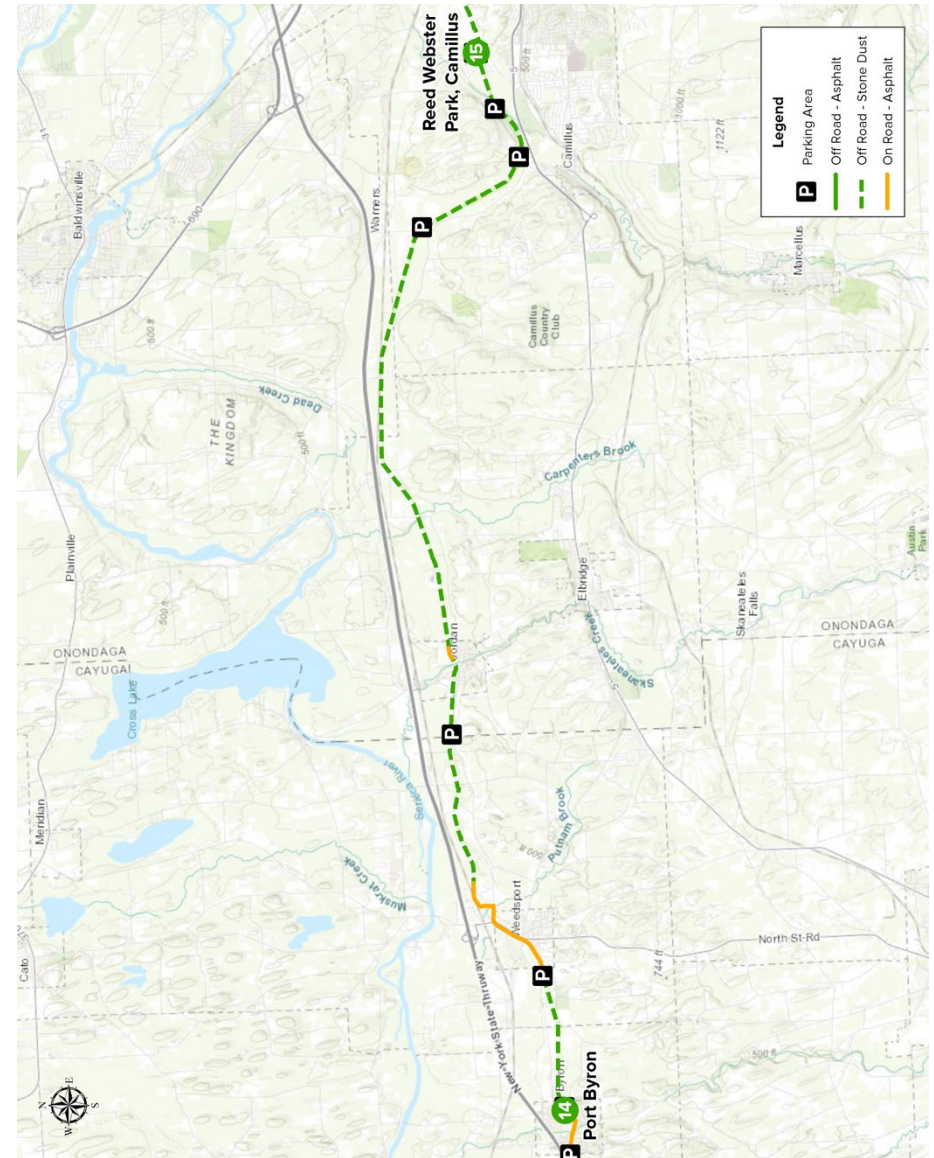
Step-by-step bicycle directions to follow for this segment of the Empire State Trail.

**Start** 15 **Camillus**

Turn	Notes	Distance
	Head west on Canalway Trail- Erie Section (Camillus to Port Byron) toward Devoe Rd	12.3 mi
→	Slight right to stay on Canalway Trail- Erie Section (Camillus to Port Byron)	66 ft
→	Slight right to stay on Canalway Trail- Erie Section (Camillus to Port Byron)	2.46 mi
→	Turn right to stay on Canalway Trail- Erie Section (Camillus to Port Byron)	0.820 mi
←	Turn left onto Towpath Rd	0.652 mi
←	Turn right onto NY-31 W/New York State Bicycle Rte 5	1.55 mi
←	Slight left onto Canalway Trail- Erie Section (Camillus to Port Byron)	2.37 mi

**End** 14 **Port Byron**

## Westbound along Erie Canal Trail



**Disclaimer:** Trail users may encounter temporary or permanent changes to the trail route as described in this cue sheet. Trail users must exercise discretion at all times to assure personal safety, including staying alert for movements by vehicles and other trail users, as well as possible modifications to the trail route.