



# Empire State Trail

Connecting New York's extraordinary experiences, people, and places.

## Rome to Erie Canal Lock 21

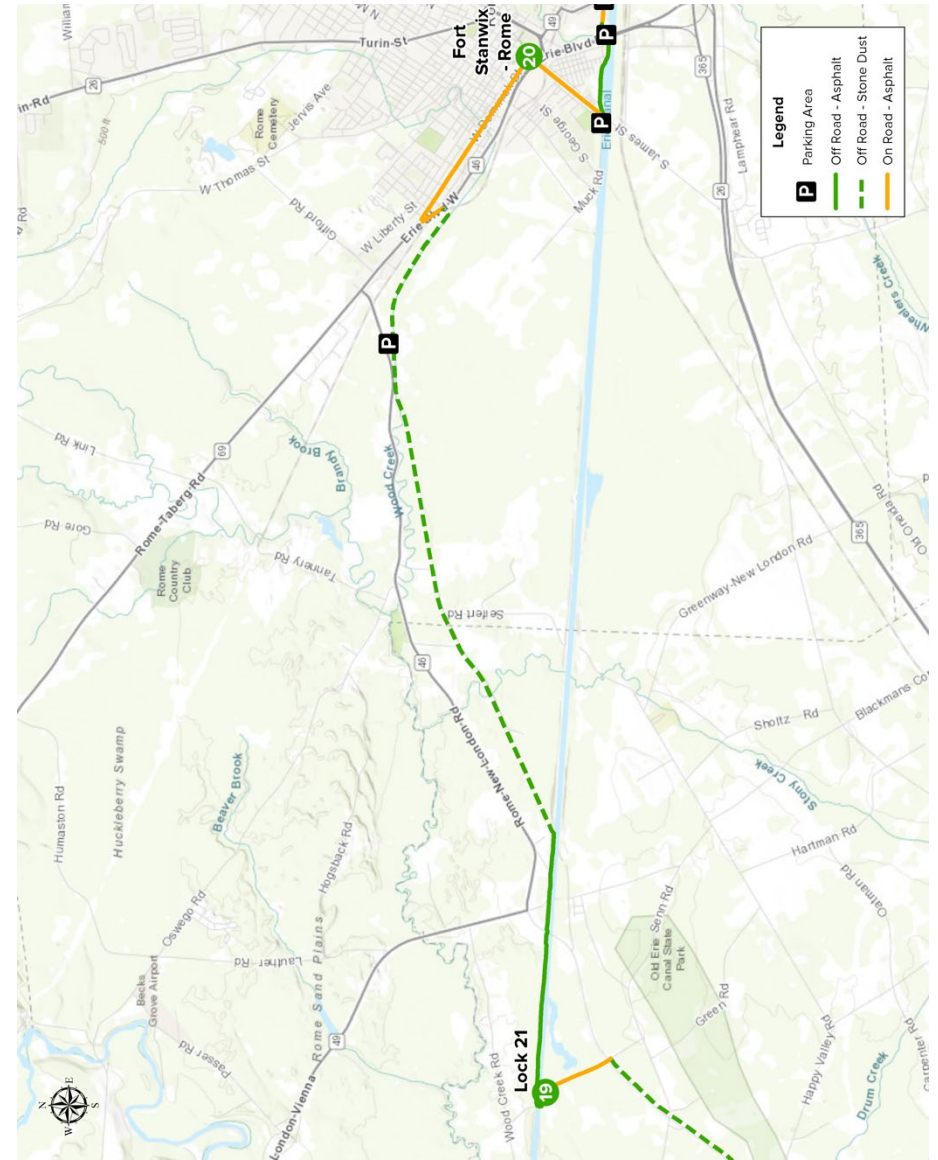
Step-by-step bicycle directions to follow for this segment of the Empire State Trail.

**Start** 20 Rome

Turn	Notes	Distance
↖	Head northwest on W Dominick St toward N Washington St	-
↑	Pass by Berkshire Bank (on the right)	1.51 mi
←	Turn left to stay on W Dominick St	141 ft
←	Turn left onto Erie Blvd W	919 ft
→	Turn right onto S Charles St	354 ft
→	S Charles St turns right and becomes Canalway Trail- Old Erie Canal State Park	7.28 mi
←	Slight left to stay on Canalway Trail-Old Erie Canal State Park	1,027 ft

**End** 19 Erie Canal Lock 21

## Westbound along Erie Canal Trail



**Disclaimer:** Trail users may encounter temporary or permanent changes to the trail route as described in this cue sheet. Trail users must exercise discretion at all times to assure personal safety, including staying alert for movements by vehicles and other trail users, as well as possible modifications to the trail route.